

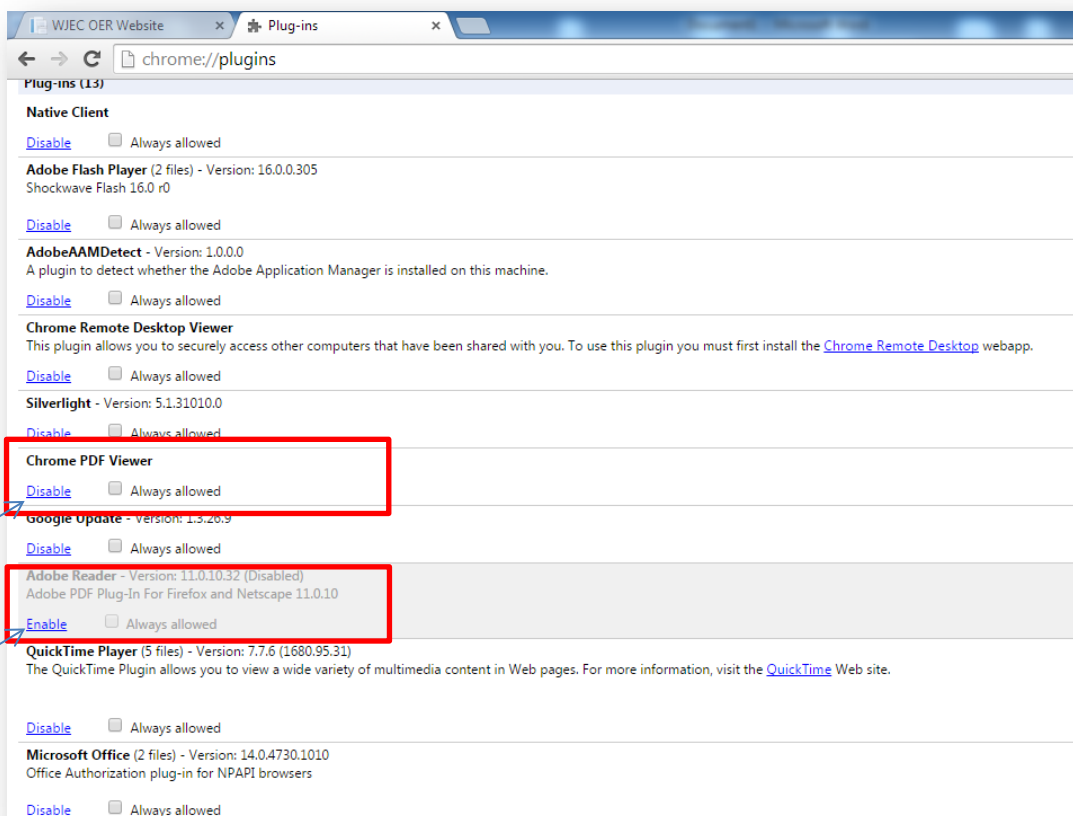


Using Google Chrome to view pdfs

Google chrome has recently included a pdf viewer within its search engine, and unfortunately it doesn't work as well as the Adobe Acrobat pdf viewer.

To force Google Chrome to use the Adobe Acrobat plugin:

1. In the Chrome address bar, type chrome://plugins
2. Disable Chrome PDF Viewer.
3. Enable the Adobe Acrobat/ Adobe Reader plugin.




If there is no Adobe Reader plugin to be seen, then a copy can be downloaded from <http://get.adobe.com/uk/reader/?promoid=KLXME>

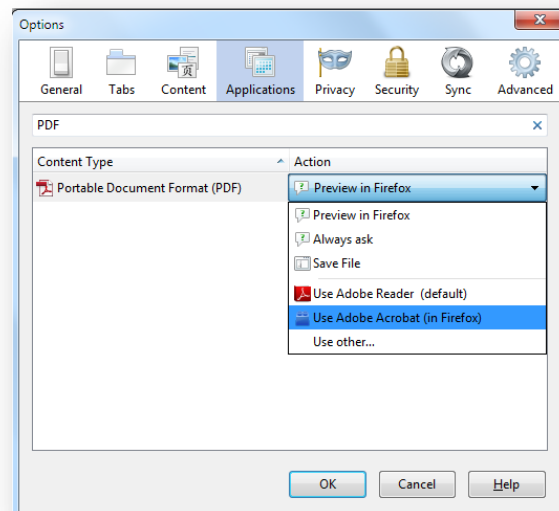
****(remember to un-tick the offer)****



Using Firefox to view pdfs

To switch from the built-in PDF viewer to another PDF viewer:

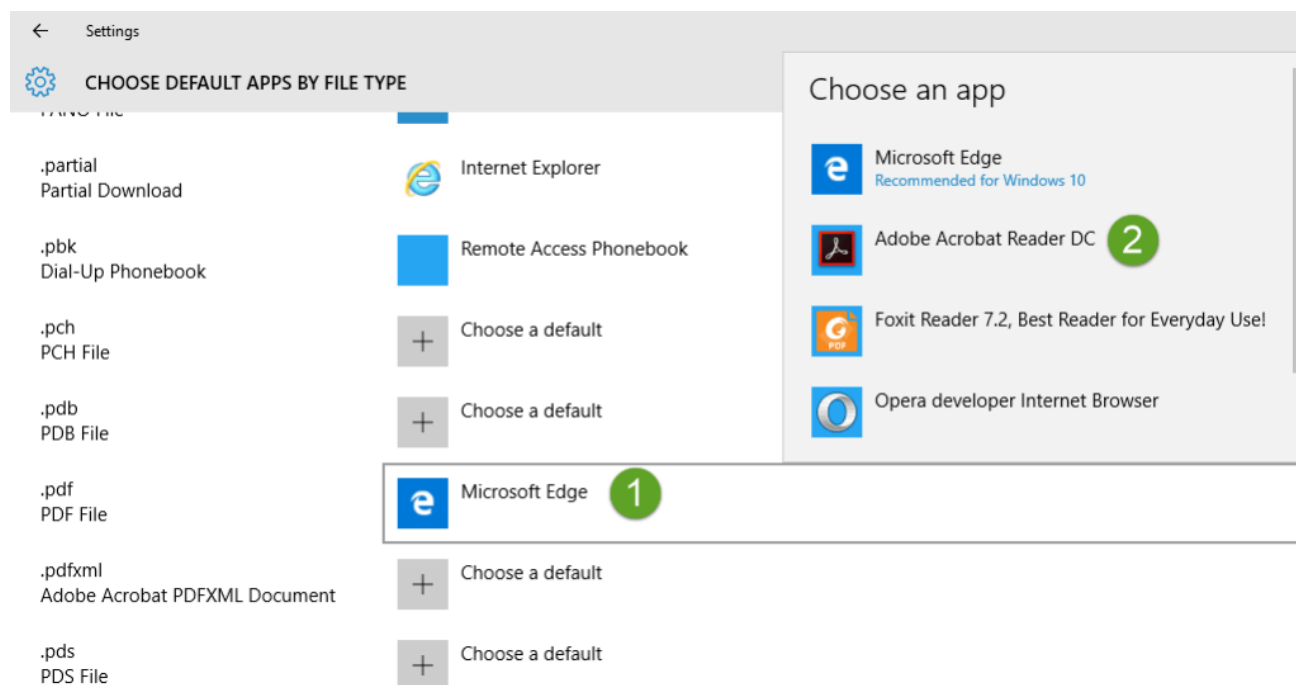
1. Click the menu button  and choose Options.
2. Select the Applications panel.
3. Find **Portable Document Format (PDF)** in the list and click on it to select it.
4. Click on the drop-down arrow in the **Action** column for the above entry and select the PDF viewer you wish to use.



5. Click OK to close the Options window.

Using Edge (Windows 10) to view pdfs

1. Click on Start Menu > Settings > System > Default Apps
2. Scroll down and select 'Choose default Apps by file type'
3. Scroll down and look for **.pdf** on the left side, click on 'Microsoft Edge' to select, once 'Choose an app' popup opens, select the application you want to set as default to open PDF file type, done.





Safari - Adobe plugin

The Adobe Acrobat plugin for Safari can be found at:

<http://get.adobe.com/reader/>

Configure Safari 8 to use Adobe's plug-in:

1. Choose **Safari > Preferences > Security > Internet plug-ins.**
2. Click **Website Settings.**
3. Select **Adobe Reader.**
4. Navigate to **When Visiting Other Website.**
5. Change to *Always Allow.*
6. Choose **Done.**



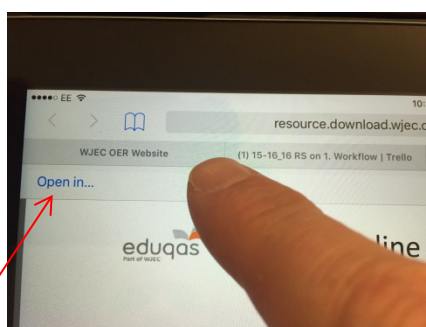
i-pad

The Adobe Acrobat app can be found at:

<https://itunes.apple.com/gb/app/adobe-acrobat-reader-view/id469337564?mt=8>

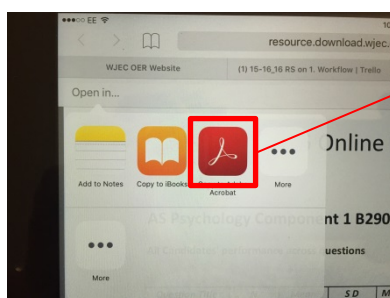
To open a pdf using the Adobe Acrobat App...

1. Open the OER site
2. Find the unit that needs to be opened, and open it – this will load the pdf in the Safari based viewer
3. Tap the top of the screen:



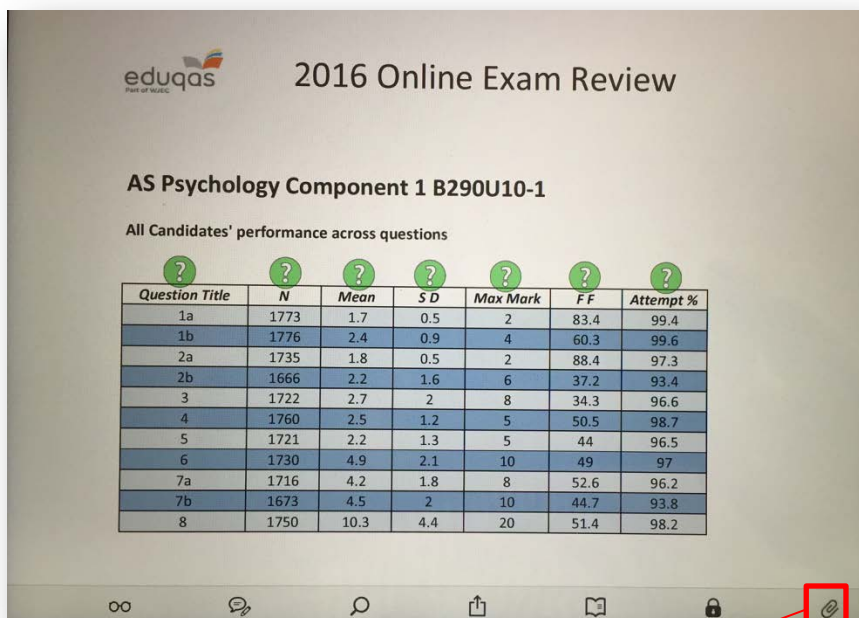
You will see the words 'Open in...' – now tap this
(if not tapped, it will disappear – repeat to show again)

4. A new window will open:



Tap the 'Copy to Adobe Acrobat'

5. The unit will now open in Adobe Acrobat, and look like this



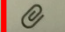
eduqas Part of WJEC

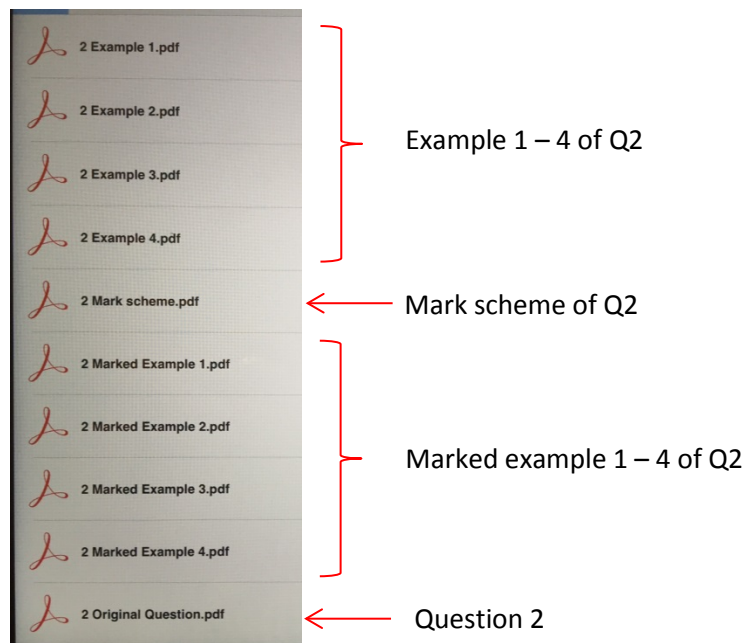
2016 Online Exam Review

AS Psychology Component 1 B290U10-1

All Candidates' performance across questions

Question Title	N	Mean	S D	Max Mark	FF	Attempt %
1a	1773	1.7	0.5	2	83.4	99.4
1b	1776	2.4	0.9	4	60.3	99.6
2a	1735	1.8	0.5	2	88.4	97.3
2b	1666	2.2	1.6	6	37.2	93.4
3	1722	2.7	2	8	34.3	96.6
4	1760	2.5	1.2	5	50.5	98.7
5	1721	2.2	1.3	5	44	96.5
6	1730	4.9	2.1	10	49	97
7a	1716	4.2	1.8	8	52.6	96.2
7b	1673	4.5	2	10	44.7	93.8
8	1750	10.3	4.4	20	51.4	98.2

6. Tap the attachments icon  in order to open the choice page for the original question, mark scheme, examples, and marked examples, as shown below...



7. Tap to open and view any of these documents.